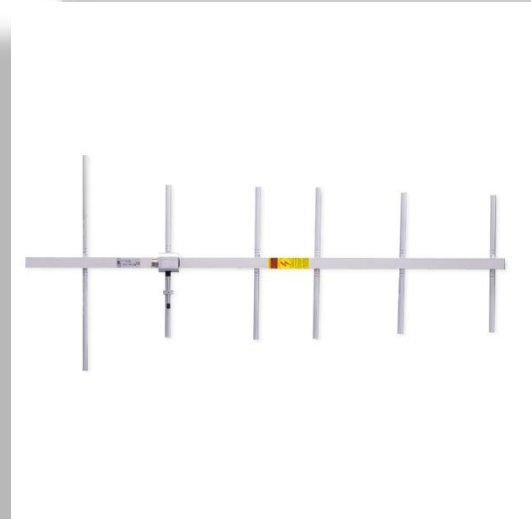


## RADIO & TV DIRECTIVE ANTENNA TX-RX ANTENNA

The **TX-RX ANTENNA** is a directive yagi type antenna which can be used for vertical or horizontal polarization, and it is made of aluminium with stainless steel clamps. This good quality and low price antenna is recommended for its directionality, proven radio electric inalterability, high gain, light weight and high weather resistance.



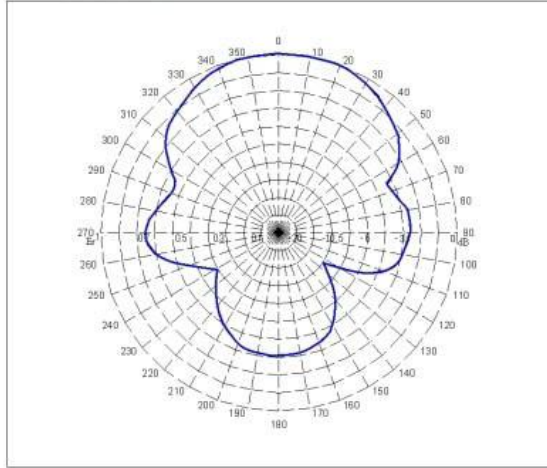
### GENERAL CHARACTERISTICS

|                           |  |
|---------------------------|--|
| <b>FREQUENCY RANGE</b>    | 175-800MHz (sub-bands 20MHz)<br>800-960MHz (sub-bands 40MHz) |
| <b>IMPEDANCE</b>          | 50Ω  |
| <b>MAXIMUM POWER</b>      | 200W   |
| <b>GAIN</b>               | 10dBd for 175-800MHz<br>14dBd for 800-960MHz                 |
| <b>POLARIZATION</b>       | Lineal   |
| <b>INPUT CONNECTOR</b>    | N(F)   |
| <b>MAXIMUM WIND SPEED</b> | 177Km/h  |
| <b>MATERIAL</b>           | Anodized aluminium   |
| <b>TYPICAL ROE</b>        | 1.2:1 (<-20dB return loss)                                   |
| <b>ASSEMBLY</b>           | 1-3" tube  |

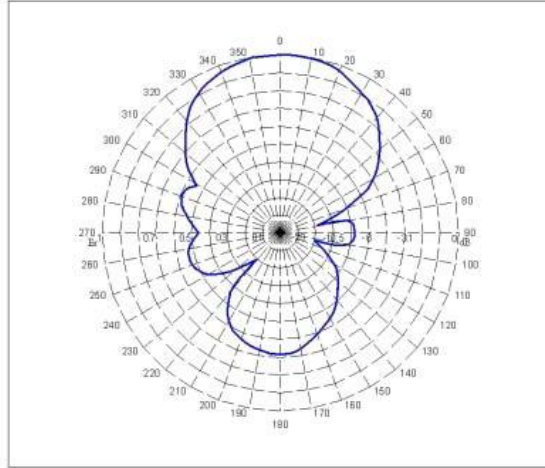
broadcast your \_ world



RADIO AND TV DIRECTIVE ANTENNA TX-RX



HORIZONTAL RADIATION PATTERN  
400-430MHz



VERTICAL RADIATION PATTERN  
400-430MHz

Note: OMB can manufacture an antenna adjusted to the customer's need in frequency and also in gain.

*\* The images and/or technical specifications are subject to change without previous notice.*

broadcast your \_ world